



INNOVATIONS CATALOG

Instant hot showers for your outdoor adventures



THE LEADER



INSTANT PORTA

1 GREEN

For years, Zodi™ has made environmental choices a top priority. From our offices to our factories, we are constantly working to reduce our carbon footprint.

2 INNOVATION

Zodi™ leads in delivering innovative products that enhance the camping comfort experience. Zodi™ products are now found in 74 countries as well as on Mt. Everest and Antarctica.

3 CONVENIENCE

Zodi™ products are dependable, compact and portable – designed with you in mind. Our convenient high-quality showers provide hot water in just seconds.

& INNOVATOR FOR



BLE HOT WATER

4 COMFORT

Zodi™ products are self-contained and offer an unparalleled level of comfort to campers, backpackers, boaters and other outdoor adventurers. Zodi™ hot showers anytime, anywhere!

5 PERFORMANCE

Think Zodi™ and you think performance! Our rugged products are built to perform in all conditions. In fact, Zodi™ products are so tough, they are used by militaries worldwide.

6 RELIABILITY

Zodi™ products are premium quality – reliable, safe and built tough, so they're ready when you are. Zodi™ also offers peace of mind through unmatched customer service.



"Thanks for making this great product! I go on 4-5 camping trips each year in remote areas, and the Zodi Hot Shower is a must. It's so easy to use, I recommend it to all of my friends."

HOT TAP™ SINGLE BURNER



INSTANT WATER HEATER & HOT SHOWER

Portable and self-contained, the Hot Tap™ is one of our most popular instant hot showers. Enjoy the convenience of instant hot showers with matchless push-button ignition. Equipped with a stainless steel burner, this Zodi™ shower provides endless hot water in just seconds. Includes a powerful battery-powered water pump and a rugged plastic storage case that doubles as a 4-gallon water container and propane tank base. Ideal for family camping, emergencies, RVs and more. (Propane tank & 4 D-cell batteries not included.)

BENEFITS

- Multi-purpose storage case holds water for up to a 10 minute shower
- Heats 60+ gallons of water between battery and propane refills
- Adjust water temperature up to 100°F with gas valve
- Easy to use – simply submerge pump in water & ignite heater
- Waterproof battery case with on/off switch (requires 4 D-cell batteries)
- Powerful 6V pump with debris screen provides great water pressure
- Complete system features compact size for easy transport & storage
- Fueled by convenient 16.4 oz propane cylinder (not included)
- Premium-quality heater is constructed of 100% metal for extra durability
- Piezo push-button ignition for instant-on convenience
- Industrial-grade brass hose connectors

| | |
|-----------|------------------------------|
| Name | Hot Tap™ |
| Product # | 6185 |
| UPC | 6 84805 06185 7 |
| Weight | 11 lbs |
| Box Size | 14½" x 10¼" x 10" |
| Packaging | color labels on plastic case |
| MSRP | see price list |



i.shower™ PERFORMANCE

The i.shower™ series is built for those on the go. With its high performance heater and compact storage, the i.shower™ is ideal for the active adventure seeker.

HIGH PERFORMANCE HOT SHOWER

Portable and self contained, the i.shower™ is packed with performance. Enjoy the convenience of instant hot showers anytime, anywhere. Equipped with a stainless steel burner, the Zodi™ i.shower™ heats water in just seconds. The powerful water pump delivers great water pressure and push-button ignition is super-convenient. Great for spring, summer and fall adventures. A complete system, including oversized storage bag. (Propane tank & 4 D-cell batteries not included.)

BENEFITS

- Higher performance expands season into spring and fall
- Adjust water temperature up to 100°F with gas valve
- 8-ft flexible shower hose with water-saving showerhead
- Extra-wide propane base with 4 snap-in spider legs for stability
- Industrial-quality brass hose connectors
- Piezo push-button ignition for instant-on convenience
- Powerful pump with debris screen offers great water pressure
- Fueled by convenient 16.4 oz propane cylinder (not included)
- Waterproof battery case with on/off switch (requires 4 D-cells)
- Stainless steel burner design for extra durability
- Premium-quality 100% metal heater construction
- A complete hot shower system (batteries & propane needed)

| | |
|-----------|-----------------|
| Name | i.shower™ |
| Product # | 3970 |
| UPC | 6 84805 03970 2 |
| Weight | 10 lbs |
| Box Size | 9¼" x 9¼" x 12" |
| Packaging | 4-color box |
| MSRP | see price list |



A COMPLETE



PUMP & BATTERY CASE



INSTANT HOT SHOWER



STORAGE BAG



HOSES

ZIP™ VALUE

The ZIP™ series is all about value. Enjoy Zodi™ quality and performance at an incredible price. Instant hot showers anytime, anywhere.



HOT SHOWERS FOR THE ENTIRE FAMILY

The ZIP™ Hot Shower is great for family camping, providing endless hot water for showers, cleanup, dishes, etc. Self-contained for use anytime, anywhere! Just add 4 D-cell batteries to the battery pack, twist on a 16.4 oz propane cylinder, and the ZIP™ Hot Shower is ready for hours of use. The ZIP™ is a complete system, including a rugged propane base with stabilizing legs as well as a convenient storage bag for transport. A great value at a great price. (Propane tank & 4 D-cell batteries not included.)

BENEFITS

- Piezo push-button ignition for instant-on convenience
- Extra-wide propane base with 4 snap-in spider legs for stability
- 8-ft flexible shower hose with water-saving showerhead
- Adjust water temperature up to 100°F with gas valve
- Powerful pump with debris screen offers great water pressure
- Waterproof battery case with on/off switch (requires 4 D-cells)
- Fueled by convenient 16.4 oz propane cylinder (not included)
- Stainless steel burner construction for extra durability
- A complete hot shower system (batteries & propane needed)

| | |
|-----------|-----------------|
| Name | ZIP™ |
| Product # | 3920 |
| UPC | 6 84805 03920 7 |
| Weight | 9 lbs |
| Box Size | 8¼" x 8¼" x 11" |
| Packaging | 4-color box |
| MSRP | see price list |



"What a difference! I've been camping in Ontario for the last 8 summers. With my Hot Tap HP, I have a hot shower every night. Zodi definitely makes the best outdoor hot shower ever."

HOT TAP HP™ DOUBLE BURNER



HOT SHOWER FOR 4-SEASON USE

The rugged all-steel construction of the High Performance instant Hot Tap HP™ makes it perfect for all-season use. This portable double-burner hot shower system heats unlimited water on demand. Features convenient matchless push-button ignition and includes a sturdy 4-gallon multi-purpose storage case. The best high-output instant hot shower ever! A complete system, including powerful battery-operated pump that draws water from any water source. (Propane tanks & 4 D-cell batteries not included.)

BENEFITS

- Double-burner design for High Performance year-round use
- Adjust water temperature up to 100°F with gas valves
- Easy to use – just submerge pump in water & ignite heater
- 8-ft flexible shower hose with water-saving showerhead
- Matchless push-button ignition for extra convenience
- Multi-use storage case is rugged and super-compact for easy transport
- 4-gallon case holds enough water for a 10 minute shower
- Powerful pump with debris screen offers great water pressure
- Fueled by convenient 16.4 oz propane cylinders (not included)
- Heater is constructed of 100% metal for extra durability
- Industrial-grade brass hose connectors

| | |
|-----------|------------------------------|
| Name | Hot Tap HP™ |
| Product # | 6125 |
| UPC | 6 84805 06125 3 |
| Weight | 14 lbs |
| Box Size | 14½" x 10¼" x 10" |
| Packaging | color labels on plastic case |
| MSRP | see price list |



"Big smiles from the edge of the Colorado River! After twelve years of rafting, my trip last month was the best ever thanks to the wonderful hot showers from my new Extreme SC. I am absolutely amazed at how well the system works."

EXTREME SC™



HAND-PUMP POWERED HOT SHOWER SYSTEM

Featuring stainless steel construction and convenient hand-pump operation, the Zodi™ Extreme™ has been the #1 hot shower of choice for back-country use for years. The 10,000 BTU multi-purpose steel stove completes the Extreme™ as a truly self-contained hot shower. Includes water temperature indicator and a shower pole holder for extra convenience. (Propane tank and shower pole not included.)

BENEFITS

- Heats to about 100°F in 5-10 minutes
- Handy thermometer displays water temperature
- Simple to use – just fill with water and place on included stove
- Multi-use 10,000 BTU heater and cooking stove collapses for transport
- Sealed 1-piece hand pump pressurizes system quickly without batteries
- 6-ft shower hose with water-conserving showerhead
- Durable stainless steel construction will never rust
- Brass on/off valve controls water-flow
- Storage bag is soft-sided and oversized, with carry strap

| | |
|-----------|---------------------------|
| Name | Extreme SC™ |
| Product # | 8170 |
| UPC | 6 84805 08170 1 |
| Weight | 12 lbs |
| Box Size | 26" x 9" x 9" |
| Packaging | color labels on white box |
| MSRP | see price list |



"The X-40 was super easy to set up right out of the box and far exceeded my expectations in terms of the hot water it cranks out! Plus, the pump is way powerful, so I was able to place the heater next to my camp, where I wanted it, instead of next to the river. This is the best thing for my camping trips!"

HOT TAP X-40™ OUTFITTER

RUGGED STEEL HOUSING

INDUSTRIAL STEEL HANDLES

ELECTRONIC IGNITION

WATER TEMP CONTROL GAS VALVE

RETRACTABLE STEEL LEGS

HIGH-FLOW 12V PUMP WITH CLIPS

WATER-SAVING SHOWERHEAD

GARDEN-HOSE ADAPTER



ULTRA HIGH-OUTPUT HOT SHOWER

The Zodi™ Hot Tap X-40™ is an ultra high-output instant water heater and shower designed for professional outfitters, base camps, cabins and horse trailers. The X-40™ delivers up to 50 hours of continuous hot water per propane refill. The 16-ft long hose allows use all over camp. Connect to any garden hose using the universal hose connector or draw from any water source using the included 12V pump. Retractable legs, rugged steel handles and a padded storage bag make for easy transport and storage. The toughest portable water heater available anywhere. So tough, it's even in use in the Antarctic! (Propane tank not included. Requires 12V power source.)

BENEFITS

- Packed with a 40,000 BTU burner for instant hot water
- 12V high-flow pump for great water pressure anywhere
- Delivers unlimited hot water for showers, dishes and more
- Extra-long 16-ft shower hose with water-conserving showerhead
- Rugged gas valve adjusts water temperature in seconds
- Electronic ignition system for instant-on heat (requires AA battery)
- Designed to connect to included 12V pump or any garden hose
- Durable padded gear bag with carry straps for easy storage & transport
- Steel handles on each side for easy placement around camp
- Retractable legs for compact storage & convenient transport
- Gas regulator connects to a 5-gallon or larger propane cylinder
- 100% steel construction for ultra-high performance in harsh environments

| | |
|-----------|-----------------|
| Name | X-40™ |
| Product # | 5146 |
| UPC | 6 84805 05146 9 |
| Weight | 36 lbs |
| Box Size | 20" x 14" x 14" |
| Packaging | 4-color box |
| MSRP | see price list |

PORTABLE WATER PUMPS



BROAD MARKET APPEAL packaging for every customer



1 **OUTDOOR**
instant shower



2 **MARINE**
bilge pump



3 **HOME**
sump pump

PUMP FOR EVERY NEED



1. INSTANT SHOWER

The Zodi™ self-contained portable hand washer and shower is super convenient! Ideal for rinsing dishes, cleaning up, washing pets, showering and more. Just add 4 D-cell batteries and place the compact and powerful pump in any water source.

| | |
|-----------|-----------------------------|
| Name | Battery-Powered Shower |
| Product # | 1066 |
| UPC | 6 84805 01066 4 |
| Weight | 2 lbs |
| Box Size | 9 5/8" x 11 1/4" x 2 1/2" |
| Packaging | clam shell with color label |
| MSRP | see price list |



2. BILGE PUMP

The Zodi™ self-contained portable water pump is ideal as a back-up bilge pump for any boat – especially inflatables, jet skis, kayaks and more. Simply add 4 D-cell batteries and place the compact and powerful pump below the waterline. A great item for every boater!

| | |
|-----------|-----------------------------|
| Name | Battery-Powered Bilge Pump |
| Product # | 1061 |
| UPC | 6 84805 01061 9 |
| Weight | 2 lbs |
| Box Size | 9 5/8" x 11 1/4" x 2 1/2" |
| Packaging | clam shell with color label |
| MSRP | see price list |



3. SUMP PUMP

The battery-powered sump pump is super convenient. Just add 4 D-cell batteries and place the compact and powerful pump in any water source. Great for home use, around the yard, on construction sites, and in emergency situations involving broken pipes or flooding.

| | |
|-----------|-----------------------------|
| Name | Battery-Powered Sump Pump |
| Product # | 1060 |
| UPC | 6 84805 01060 2 |
| Weight | 2 lbs |
| Box Size | 9 5/8" x 11 1/4" x 2 1/2" |
| Packaging | clam shell with color label |
| MSRP | see price list |



"My friend recommended the Zodi i.hut as the best privacy tent around. With its generous size, you have a lot of space and the huge clip-on floor is so convenient – you aren't showering on dirt or rocks!"

i.hut™ PRIVACY ENCLOSURE



PORTABLE XL-SIZE PRIVACY ENCLOSURE

The self-supporting Zodi™ i.hut™ is HUGE – almost 4 ft wide per side and 6 ft across! Great for showering, bathrooms and changing clothes in private. The overlapped door springs shut with pole tension, without the hassle of zippers. The oversized detachable floor keeps you clear of mud and makes clean-up a snap. Industrial quality with professional-rated components. The i.hut™ is the best portable XL-size shower enclosure available!

BENEFITS

- Self-supporting enclosure, sets up anywhere
- XL-size, 4 feet wide per side, almost 6 feet diagonal
- Coated nylon sides for extra waterproof durability
- Corner straps secure i.hut™ on sand & rocks with rocks or water jugs
- Elevated walls & detachable floor for fast & easy clean-up
- Oversized storage bag for easy storage & transport
- Oversized mesh pockets for soap, shampoo & other needs
- Open roof for ventilation of heat & odors
- Zipperless door snaps shut from pole tension

| | |
|-----------|-----------------|
| Name | i.hut™ |
| Product # | 1077 |
| UPC | 6 84805 01077 0 |
| Weight | 12 lbs |
| Box Size | 28" x 6" x 6" |
| Packaging | 4-color box |
| MSRP | see price list |



"This product is so great. I have an instant camp fire anywhere without gathering the wood! I can't wait to get one of your showers!"

i.fire™

METAL FLAME SCREEN

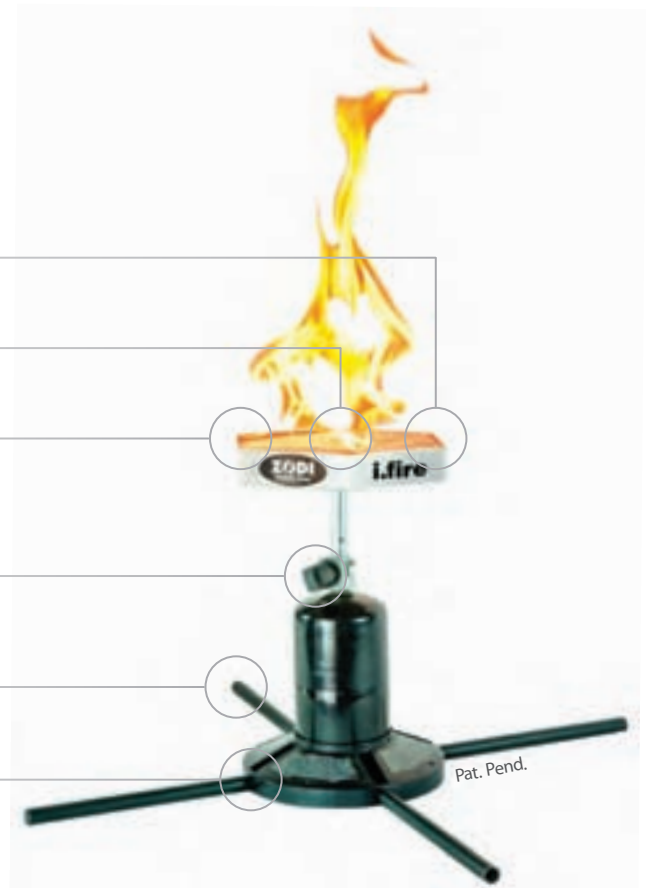
STAINLESS STEEL BURNER

METAL HOUSING

FLAME CONTROL GAS VALVE

4 SNAP-IN SPIDER LEGS

STURDY PROPANE BASE



PROPANE-FUELED CAMPFIRE ANYWHERE

The Zodi™ i.fire™ uses propane to provide an instant campfire, without the need for wood or the mess of coals and ash. Perfect for use on the patio, out at the beach, or at your favorite campsite. Simply connect to a 16.4 oz propane cylinder and ignite. The all-metal gas-powered design of the i.fire™ is approved for use in most areas restricting open fires. Very lightweight and compact. Take it anywhere! (Propane tank not included.)

BENEFITS

- All-metal construction approved in most fire-restricted areas
- Eliminates the need for wood and the mess of coals and ash
- Stainless steel burner construction for extra durability
- Fueled with convenient 16.4 oz propane cylinder (not included)
- Compact size for easy transport
- Sets up fast and easy to use
- Includes custom bag and propane base with spider legs

| | |
|-----------|-----------------|
| Name | i.fire™ |
| Product # | 7060 |
| UPC | 6 84805 07060 6 |
| Weight | 3 lbs |
| Box Size | 10" x 10" x 4" |
| Packaging | 4-color box |
| MSRP | see price list |

ACCESSORIES

**FIRE COIL™**

The Zodi™ Fire Coil™ is designed for convenience, delivering hot water with just a camp fire. Simply connect the Fire Coil™ to an elevated water jug and place the coil in the camp fire. Water flows from the elevated jug, through the hot coil, into the empty lower water jug. Lightweight and compact. Great for heating solar showers at night. (Water jugs not included.)

| | |
|-----------|-----------------|
| Product # | 7002 |
| UPC | 6 84805 07002 6 |
| Weight | 2 lbs |
| Box Size | 26½" x 8½" x 4" |
| Packaging | 4-color box |
| MSRP | see price list |

**GARDEN HOSE ADAPTER**

Connect your Zodi™ hot shower to any garden hose for a never-ending water flow.

| | |
|-----------|--------------------------|
| Product # | 1095 |
| UPC | 6 84805 01095 4 |
| Weight | 1 lb |
| Box Size | 8" x 5" x 5" |
| Packaging | color label on white box |
| MSRP | see price list |

**SINGLE BURNER BULK PROPANE TANK KIT**

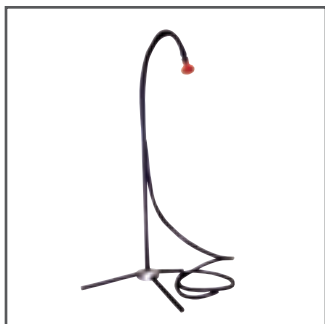
The Single Burner Bulk Propane Tank Kit delivers up to 60 hours of use with Zodi™ heaters when connected to a standard 5-gallon propane tank. Includes a powder-coated bracket for attaching to the propane tank collar. Features a convenient thumb-wheel for hand tightening – no tools required. (Tank not included.)

| | |
|-----------|--------------------------|
| Product # | 1092 |
| UPC | 6 84805 01092 3 |
| Weight | 2 lbs |
| Box Size | 12" x 8" x 4" |
| Packaging | color label on white box |
| MSRP | see price list |

**TWIN BURNER BULK PROPANE TANK KIT**

The Twin Burner Bulk Propane Tank Kit will give you up to 50 hours of use with either the Hot Tap HP™ or the Hot Vent™! Includes a mil-spec propane Y-hose for double burner showers and a powder-coated bracket for attaching to the propane tank collar. The Bulk Propane Tank Kit delivers up to 500 showers between propane refills. (Standard 5-gallon tank not included.)

| | |
|-----------|--------------------------|
| Product # | 1090 |
| UPC | 6 84805 01090 9 |
| Weight | 3 lbs |
| Box Size | 12" x 8" x 4" |
| Packaging | color label on white box |
| MSRP | see price list |



SHOWER POLE WITH TRIPOD STAND

Enjoy hands-free showering with the adjustable Zodi™ shower pole. The tripod base provides great stability on all ground conditions. The pole collapses for washing hands or dishes. Includes a handy nylon storage bag. Designed to also work with the Zodi™ i.hut™.

| | |
|-----------|-----------------|
| Product # | 1068 |
| UPC | 6 84805 01068 8 |
| Weight | 3 lbs |
| Box Size | 12" x 2" x 8" |
| Packaging | 4-color box |
| MSRP | see price list |



6V REPLACEMENT PUMP

The 6V pump is ultra convenient. Just add 4 D-cell batteries and place the compact and powerful pump in any water source. Designed specifically for use with Zodi™ water heaters 6185, 3970, 3920 and 6125. This is also the replacement pump for the 1066, 1061 and 1060. (Batteries not included.)

| | |
|-----------|--------------------------|
| Product # | 1067 |
| UPC | 6 84805 01067 1 |
| Weight | 1 lbs |
| Box Size | 8" x 5" x 5" |
| Packaging | color label on white box |
| MSRP | see price list |



12V PUMP WITH CLIPS

The 12V pump connects to any 12V battery with the convenient jumper-cable style battery clips. Expect great water flow and 24/7 performance. Pump includes clips and a 10-ft cord. Provides up to 1 gallon of unrestricted water flow per minute. Works with Hot Tap™ and Stove Top™ models.

| | |
|-----------|--------------------------|
| Product # | 1094 |
| UPC | 6 84805 01094 7 |
| Weight | 2 lbs |
| Box Size | 8" x 5" x 5" |
| Packaging | color label on white box |
| MSRP | see price list |



12V X-40™ PUMP WITH CLIPS

Ultra high-output 12V performance delivers up to 3 gallons per minute free flow or up to 1 gallon per minute when attached to the X-40™. Slim design fits through the neck of many water jugs for extra convenience. Garden hose thread attaches to X-40™ or any garden hose. Complete with jumper-cable style battery clips.

| | |
|-----------|--------------------------|
| Product # | 2020 |
| UPC | 6 84805 02020 5 |
| Weight | 2 lbs |
| Box Size | 8" x 5" x 5" |
| Packaging | color label on white box |
| MSRP | see price list |



"My horses love you! The Hot Tap Pro is so wonderful. It is without doubt one of the best accessories I have in my horse trailer! In the off season, we take the Pro up to our little cabin in the Rockies. For the first time, our day now ends with a long pleasurable hot shower. Thank you!"

HOT TAP PRO 70™

MIL-SPEC STAINLESS STEEL CONSTRUCTION

REDUNDANT ELECTRONIC IGNITION

GAS VALVES (2)

WATER TEMP CONTROL VALVE

SECOND SHOWER HOSE CONNECTOR

INPUT HOSE WITH GARDEN HOSE CONNECTOR

SOLID NEVER-FLAT TIRES

EXTRA-LONG SHOWER HOSE

MULTI-PATTERN SHOWERHEAD



INDUSTRY-LEVEL PERFORMANCE

The stainless steel Hot Tap Pro 70™ features 70,000 BTUs of instant heat and is our most popular HAZMAT portable hot shower system. High volume hot water flows in seconds. One showerhead standard with the second quick-disconnect showerhead optional. Features quick-release hose connection for extra convenience. Compact for easy storage. (Propane tank not included.)

BENEFITS

- Easy-to-use control knob adjusts water temperature in seconds
- Tough mil-spec stainless steel construction
- Dual push-button electronic ignitors (requires 2 AA batteries)
- Extra-long shower hose with multi-pattern showerhead
- Industrial-grade brass garden-hose connector for cold water intake
- Self-contained design requires no electric power
- Includes rugged steel cart with never-flat tires for quick transport
- Optional second showerhead with quick disconnect
- Compact size - stores easily in fire truck equipment compartment

| | |
|-----------|---|
| Name | Hot Tap Pro 70™ |
| Product # | 5150 |
| UPC | 6 84805 05150 6 |
| Weight | Pro 57 lbs Cart 56 lbs |
| Box Size | Pro 28" x 19" x 20" Cart 20" x 25" x 40" |
| Packaging | double-walled cardboard box |
| MSRP | see price list |



"Our hospital purchased the Hot Tap Pro 100 to use with our decon equipment. It's quick and easy to set up and works every time with zero maintenance!"

HOT TAP PRO 100™

MIL-SPEC STAINLESS STEEL CONSTRUCTION

INDUSTRIAL-GRADE HANDLES

REDUNDANT ELECTRONIC IGNITION

GAS VALVES (3)

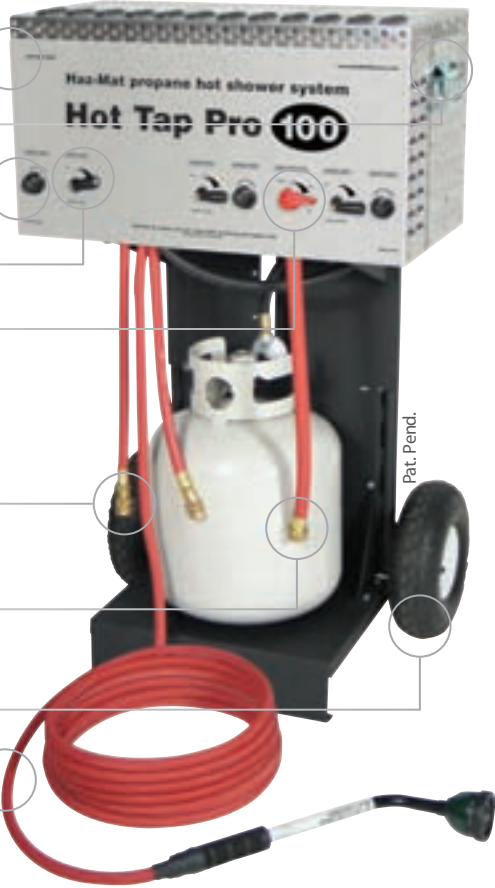
WATER TEMP CONTROL VALVE

SECOND & THIRD SHOWER HOSE CONNECTORS

INPUT HOSE WITH GARDEN HOSE CONNECTOR

SOLID NEVER-FLAT TIRES

EXTRA-LONG SHOWER HOSE WITH MULTI-PATTERN SHOWERHEAD



INDUSTRY PERFORMANCE

The Pro 100™ features over 100,000 BTUs of heat, ready for high volume hot water flow. Capable of up to 3 hot showerheads for multiple decon hot shower stations. One showerhead included with two quick-disconnect showerheads optional. Expect very high flow and high heat gain. Stainless steel for extra durability. (Propane tank not included.)

BENEFITS

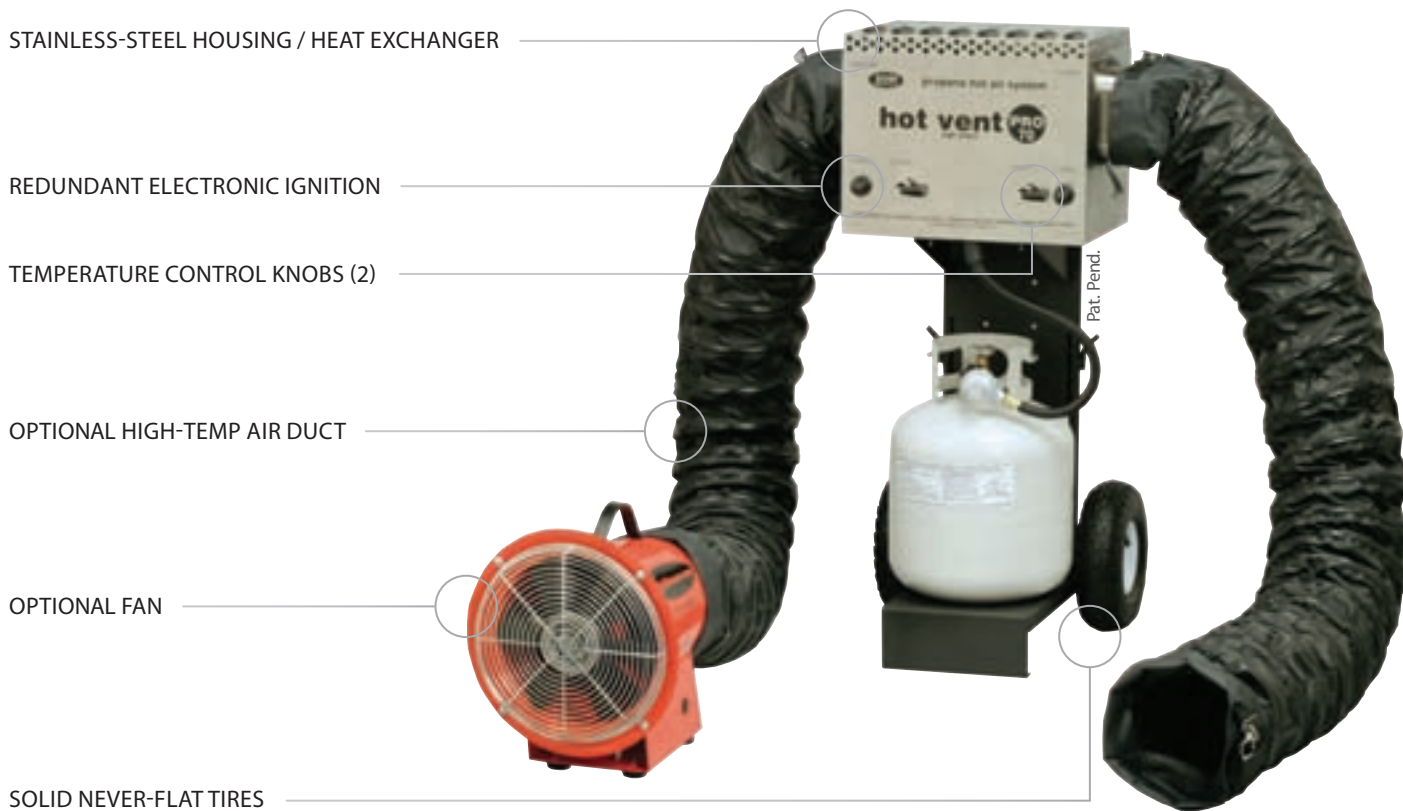
- Easy-to-use control knob adjusts water temperature in seconds
- Tough mil-spec stainless steel construction
- Triple push-button electronic ignitors (requires 3 AA batteries)
- Extra-long shower hose with multi-pattern showerhead
- Self-contained design requires no electric power
- Includes rugged steel cart with solid never-flat tires
- Optional second and third showerheads with quick-disconnect
- Industrial-grade brass garden-hose connector for cold water intake
- Compact size - stores easily in fire truck equipment compartment
- In use worldwide by military and HAZMAT

| | |
|-----------|---|
| Name | Hot Tap Pro 100™ |
| Product # | 5170 |
| UPC | 6 84805 05170 4 |
| Weight | Pro 82 lbs Cart 56 lbs |
| Box Size | Pro 37" x 19" x 21" Cart 20" x 25" x 40" |
| Packaging | double-walled cardboard box |
| MSRP | see price list |



"The Hot Vent Pro 70 is fast, powerful and easy to use. It heats our shelter faster than ever. We are so satisfied, we are buying more Hot Vents to equip all of our HAZMAT shelters. We even bought one for our \$100K trailer that already had a heater... That's saying something!"

HOT VENT PRO 70™



CLEAN SAFE HEAT FOR YOUR HAZMAT SHELTER

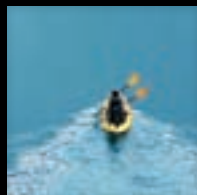
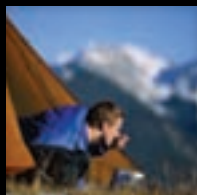
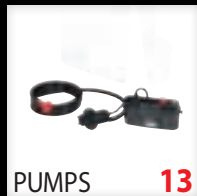
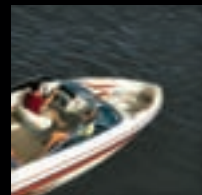
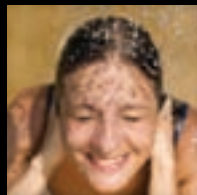
The Hot Vent Pro 70™ features 70,000 BTUs of safe heat. This unit is in use worldwide, heating all types of enclosures and tents. Designed with positive pressure features, the Hot Vent Pro™ keeps carbon monoxide outside and the clean safe heat inside. Blower and air ducts sold separately. (Propane tank not included.)

BENEFITS

- Rugged heater is built from stainless steel
- Safe 250°F forced heat in seconds
- Clean safe heat without dangerous fumes
- Connects to any 8-12" blower / air duct system
- Compact size - stores easily in fire truck storage compartment
- Sets up in seconds
- Rugged steel cart with never-flat tires for easy transport around site
- Blower and air tubes sold separately

| | |
|-----------|---|
| Name | Hot Vent Pro 70™ |
| Product # | 5990 |
| UPC | 6 84805 05990 8 |
| Weight | Pro 59 lbs Cart 56 lbs |
| Box Size | Pro 28" x 19" x 20" Cart 20" x 25" x 40" |
| Packaging | double-walled cardboard box |
| MSRP | see price list |

WHAT'S INSIDE



1-800-589-2849 USA
1-801-255-6418 INTL
sales@zodi.com

Zodi Outback Gear © 2010
All rights reserved.
www.zodi.com

Zodi Outback Gear, LLC
6980 South 400 West
Midvale, UT 84047